



## Thank you for your interest of our offer!

We would like to present you our offer to purchase of a modern, **two-story house HETKI FOUR. With a total area of 70 sqm.**

The offer includes all elements prefabricated in our factory.

The assembly of house is carried out using the attached instruction, in which we have described each stage of the work step by step. Including the list of the materials needed at each of the stages.

The set includes all the materials to put the house in a closed state. This means that the offer includes the construction of the house with wall panels and all the necessary mounting elements (foams, screws, membranes), windows, doors, as well as a complete facade, roofing with gutters and downspouts. Visualizations in our gallery show what the finished house looks like after being assembled from the outside. We use for our houses only reputable companies such as: **Budmat, Swiss Krono, Veka, Marcopol.**

All elements have been cut and numbered already at the production stage.

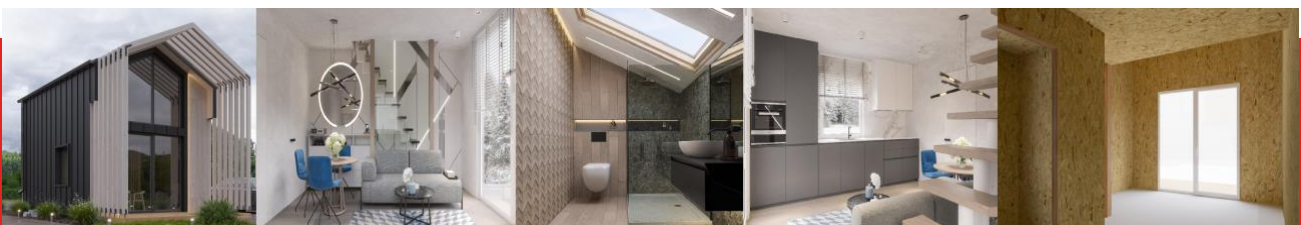
Our time spent in the factory on the prefabrication process reduces the scope of work, that has to be done during conventional construction method by more than 70% and it also reduces costs by up 65%.

Production accuracy in factory conditions, supervision of quality control at every stage of production, qualified staff and short time of order realization distinguishes our offer from the. Wide competition.

Experienced builders can build this house in 8-10 days. Considering the already quick time of realization compared to traditional methods, people with basic construction knowledge can build it in 12-15 days.

The control of the outside teams by the investor is also easier because every phase of construction is clearly described in the instruction.

Very important factors are: working time reduction, which is associated with constant increases remuneration of teams, lower power consumption, less noise during the work, waste reduction to a minimum and costs related to their disposal, no drying time for materials during construction (works are carried out dry), no need to insulate the building after erecting the walls (panels SIP have a 15 cm EPS core), reducing costs and the number of departures for missing items (everything delivered at once) as well as reducing the amount of unnecessary purchased materials, the possibility of assembly at any time of the year and completion of the entire investment, with furniture in less than a month from the start of the work.



The interior design presented in the photo gallery is only a proposal and inspiration for a future customer. Our offer consists of a DIY house in state closed, unfinished.

This allows for any interior arrangement, as well as successive finishing work. Works such as electrical, hydraulic and mechanical ventilation installations are responsibility of the client.

The height of the ridge pole is over 230 cm. The height on the ground floor is 250 cm. It is ideal height and does not overwhelm as in case 220 cm.

Two, opening skylights 68x118 cm let in enough sunlight. Windows are triple-glazed. Mounted on the expanding tape, not a foam like before.

Window factor - 0,90W/sqm.

Two gable windows 206x119x169 – one open, second one tilt, triple-glazed, PCV, color anthracite outside/ white inside. Mounted on the expanding tape, not a foam like before.

Window factor: 0,70w/sqm.

The balcony door open/tilt, 238 H x 248 W, with an opening wing 100 cm wide and permanent site. Windows are triple- glazed, PCV, outside in anthracite color and inside in white. Window factor - 0,70W/sqm.

The living room window 118 H x 117 W, open/tilt, triple-glazed, PCV, color anthracite outside and white inside. Mounted on the expansion tape. Window factor - 0,07W/sqm.

The patio door 213 H x 103 W, open/tilt, triple-glazed, PCV, outside in anthracite color and inside in white. Window factor: 0,70 W/sqm.

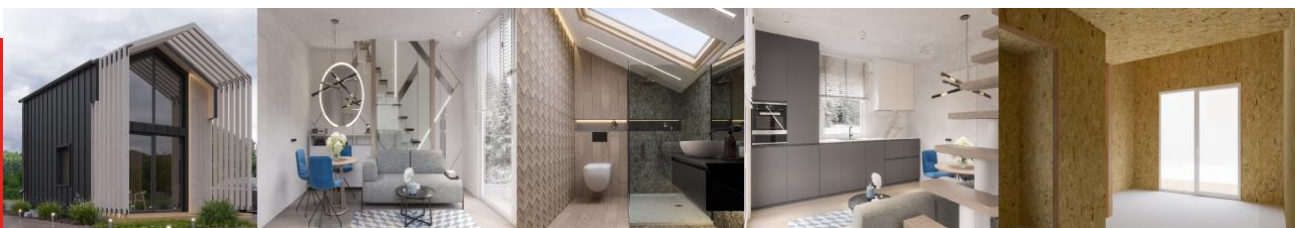
The bathroom window 117 H x 60 W open/tilt, triple-glazed, PCV, outside in anthracite color and inside in white. Mounted also on the expanding tape

The construction of the house based on branded wood, certified C24 - Scandinavian wood, which does not need impregnation (humidity around 18%).

Panels SIP as elements of walls, external walls, partition walls, floor and roof.

Windproof membranes for elevation, facade laths, modern roof type membrane "Pasta"(under the seam sheet). A set of screws (all Torx type) - certified.

The routing foams and branded foam gun, waterproofing to protect the bottom of the wall external, polystyrene grater - needed occasionally to correct the material allowance and during occurrence of non-standard modifications for example: installation of an additional window (this stage of work only on your own range). "Taker" type staples - membrane fastening. Mineral wool strip needed to seal the ridge. Fundamental foil 30 cm wide for foundation.



Elevation boards and roof soffit - pine, around 12 cm wide, which do not require sanding (it is enough to tint with the impregnation in the selected color). Boards mounted with "Torx" screws. Dry material (humidity around **18%**).

Modern seam plate roofing made by brand Budmat.

It is a leading manufacturer of roofing plates and more. Color of the roofing RAL 7016 – anthracite matt..

The assembly of the roofing with the use of „farmer” fasteners is carried out in invisible places (under the sheet overlap).

### **Plate model - Iron Click**

The latest system on the market, that is easy to install.

The facade plate is the same model described above - without exception. All elements are prefabricated to the size.

Flaps and other flashings are also in the same color RAL 7016- anthracite matt (as above).

Each element from wall panels to screws, foam and tiny staples have own unique code, which is assigned to each assembly stage.

We transport to anywhere in the world (anywhere where it is possible). The cost of transport is calculated individually.

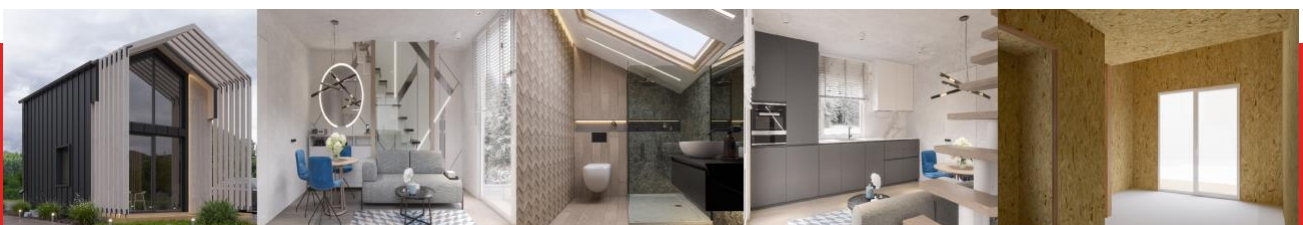
We attach a warranty card to the offer.

At this moment, the order fulfillment time is 35 days long from signing the contract. We start realization by an advance payment - 40% of the order value. The payment of the rest (60%) takes place within three days before the departure from our factory or self-pickup. You will need three people to unload the elements. The driver only help with unloading.

The heaviest elements of the set are maximum 70 kg.

----

The external pergola visible in the visualizations is the only element that is an additional option. Not included in the price



### The pergola set includes:

- construction beams,  
(To be colored/impregnated on your own)  
Impregnates for your own purchase locally, adapted to the local climate. The beams are cut and drilled.
- U-type anchors, painted black matt, powder paint,
- „X” wall braces/fasteners, discreet fasteners between the spans, painted black matt, powder paint, solid, steel, - A set of fasteners – mounting screws, color – black,
- assembly instruction.

----

### External dimensions of the house (total):

width: 4,92m

length: 6,94m

height: 5,40m

roof angle: 18 degrees

### Insulation layer :

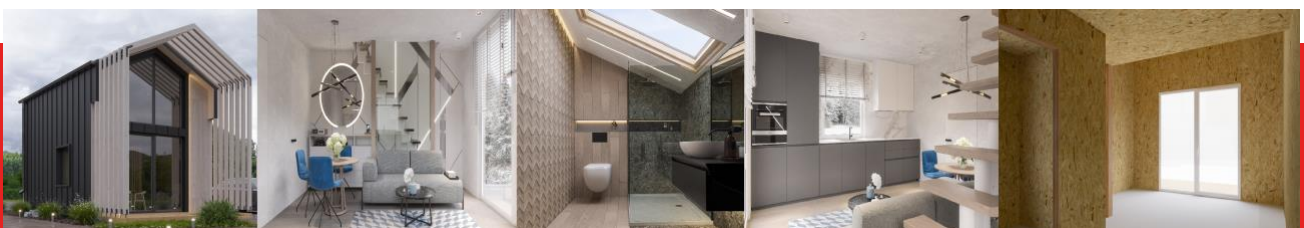
15 cm – EPS 80

Parameter-U 0,23

It is possible to insulate the external walls with double layer wool 3,5 cm.

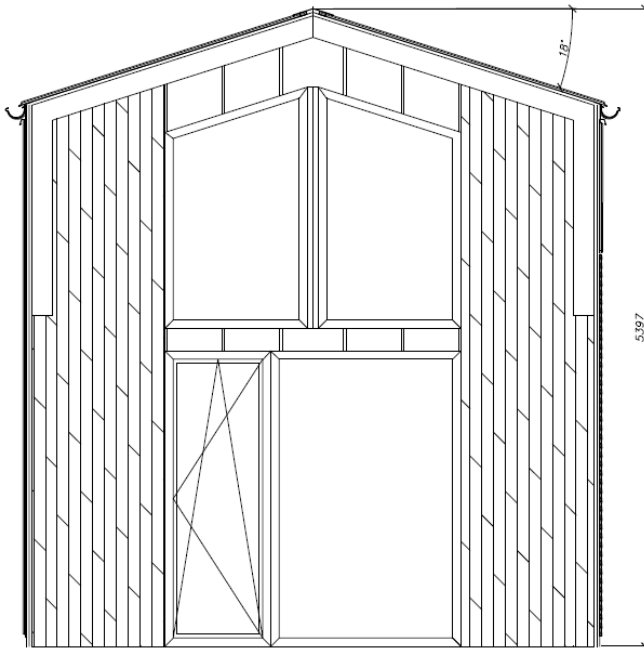
By using external thermal insulation (in the grate under the facade), we obtain the wall parameter of U 0,18, however on the roof U 0,15.

We recommended a foundation slab as a foundation (we send the project by e-mail)

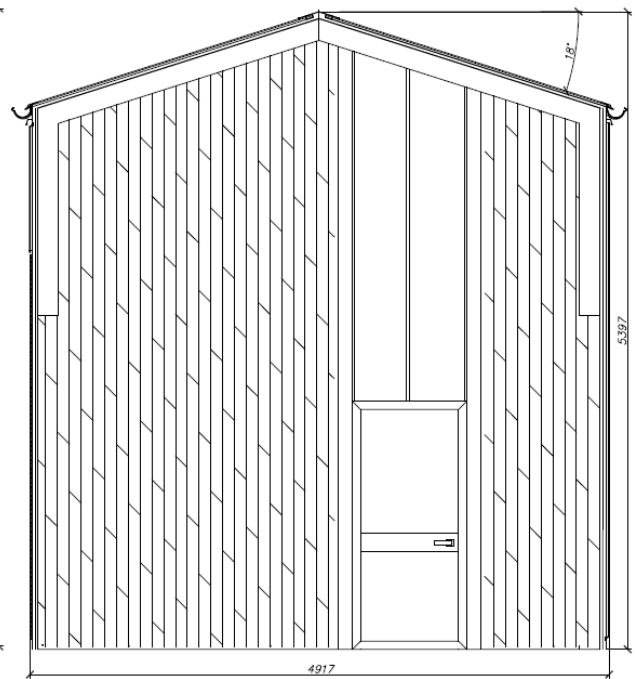


## Elevation – front/back view

*Terrace elevation*

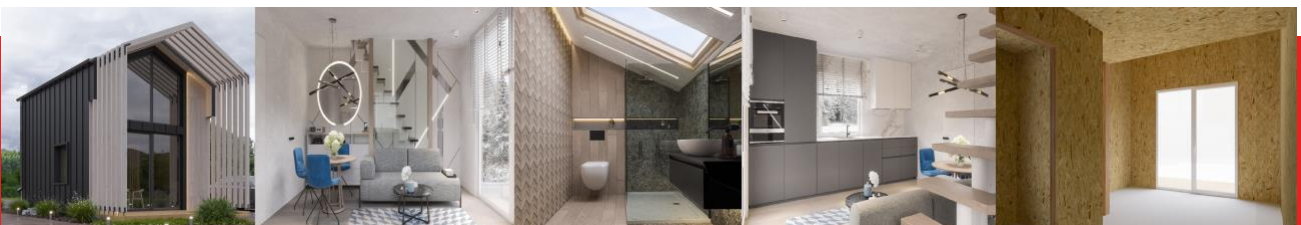
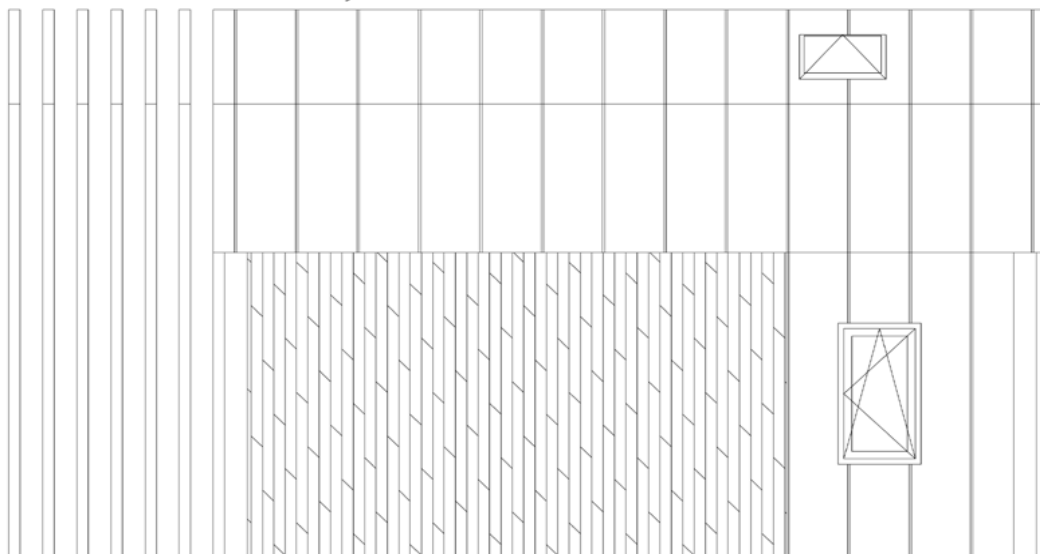


*Front elevation*



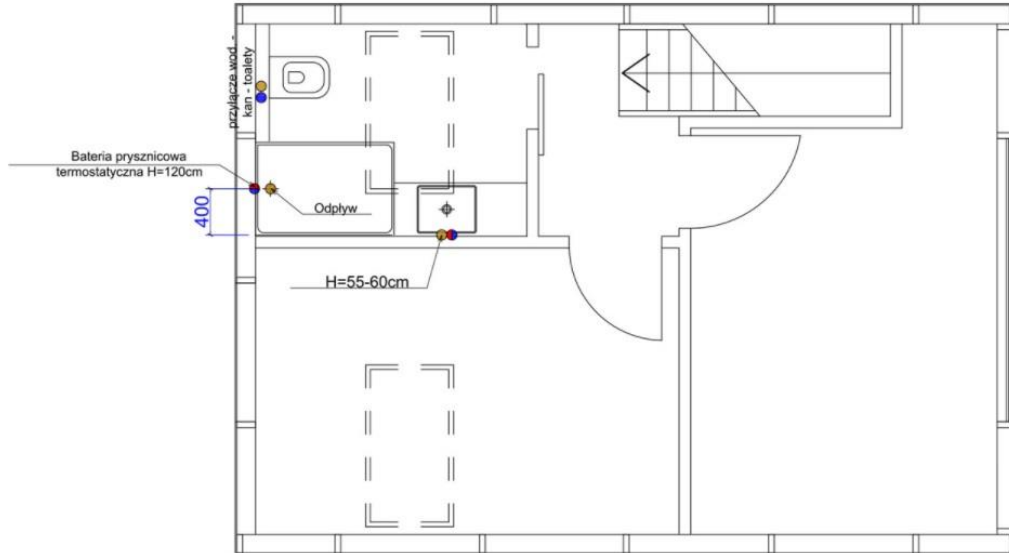
## Elevation – side view

*Elewacja boczna*

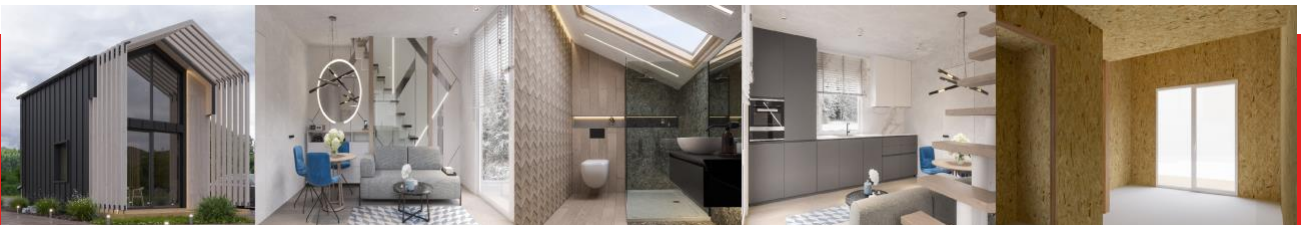
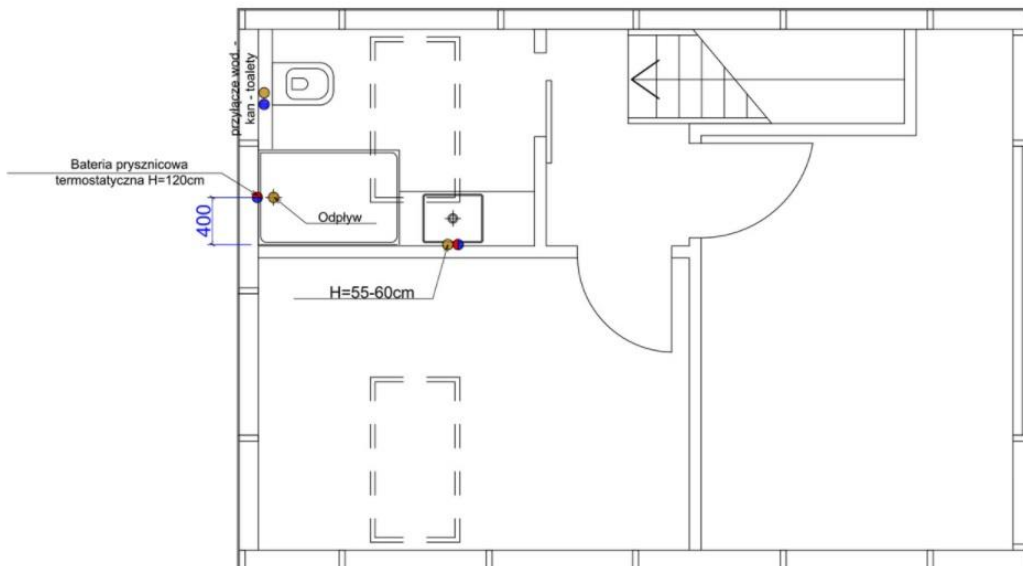


# Water and sewer connections

PROJEKT PRZYŁĄCZY WODNO-KANALIZACYJNYCH PODDASZA

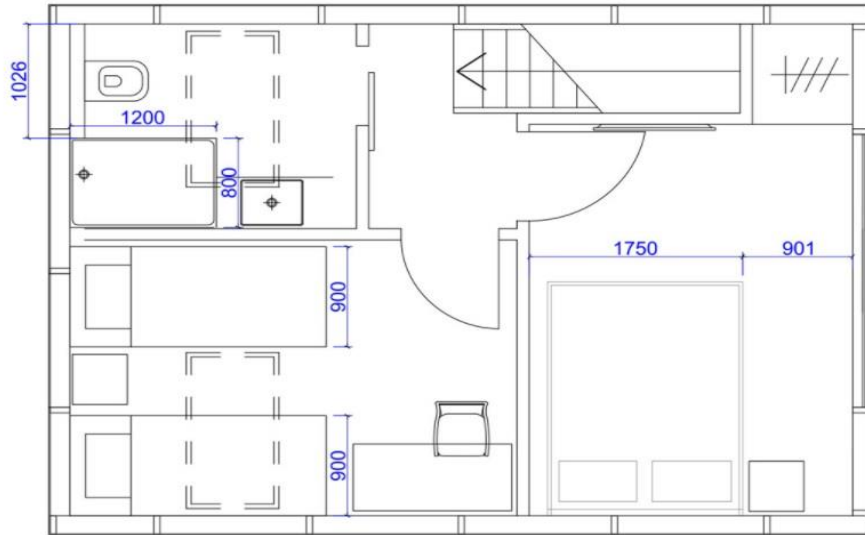


PROJEKT PRZYŁĄCZY WODNO-KANALIZACYJNYCH PODDASZA

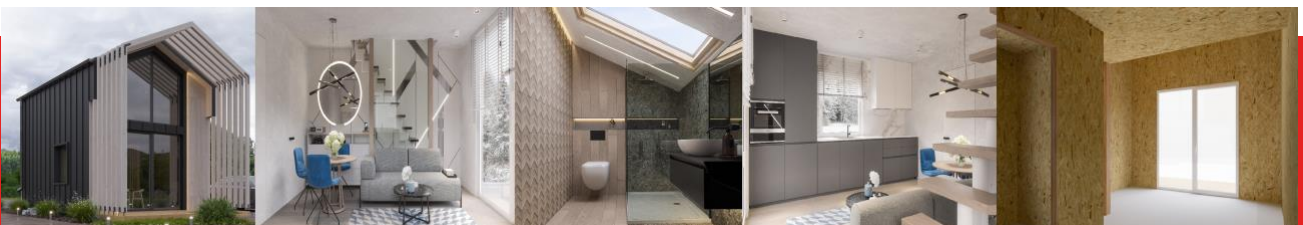
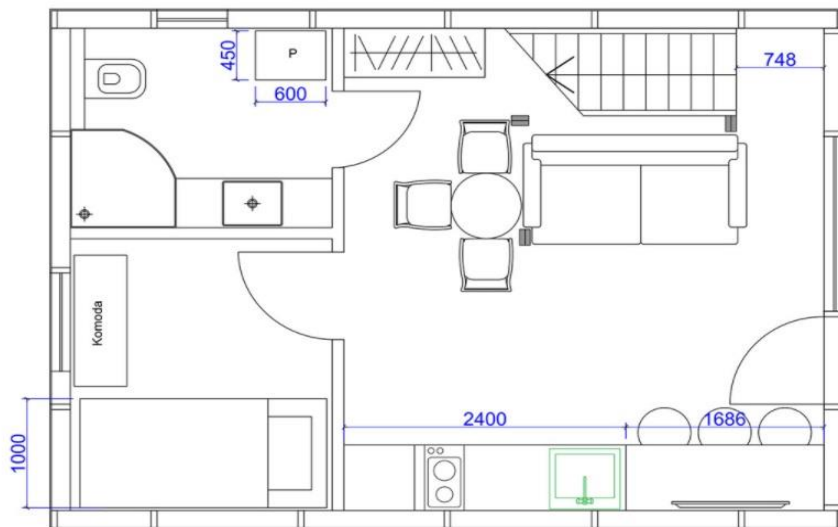


# House plans

UKŁAD FUNKCJONALNY PODDASZA



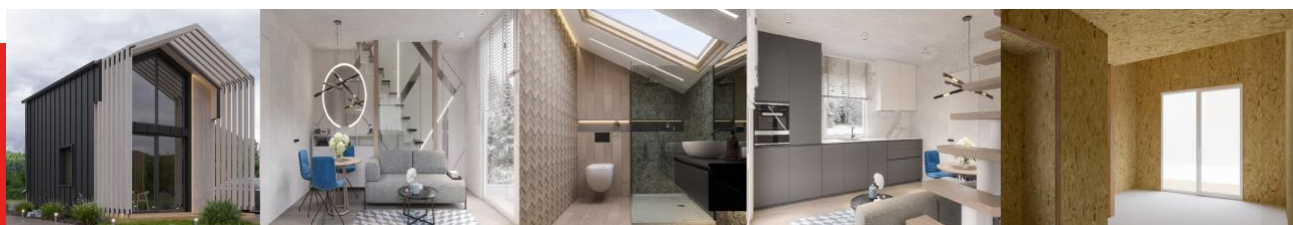
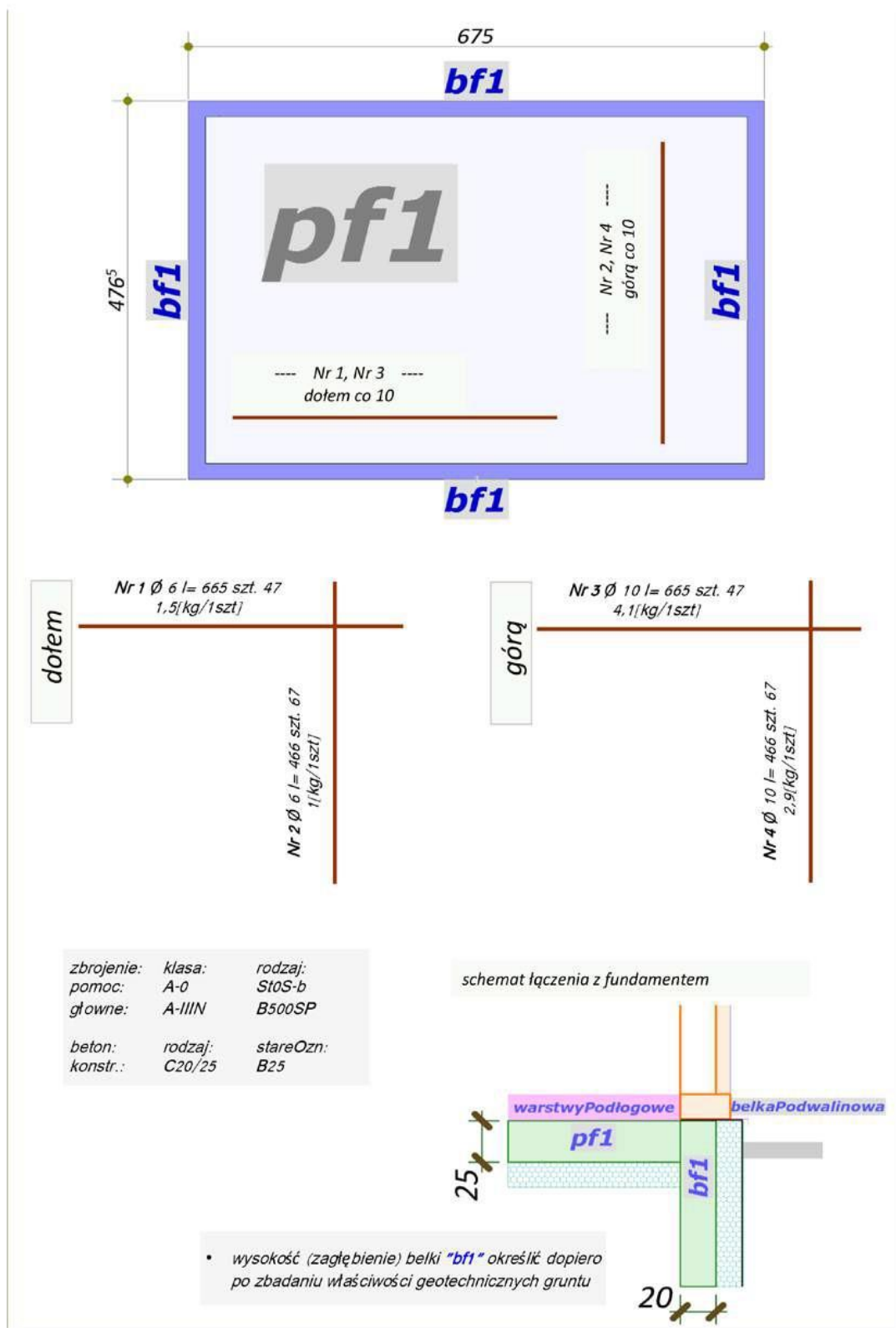
UKŁAD FUNKCJONALNY PARTERU







# The foundation plate

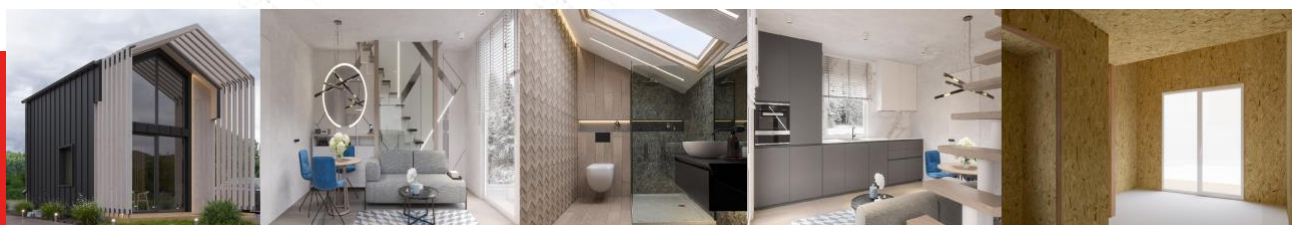


**Model**

**HETKI FOUR**

<b>The building area</b>	<b>35sqm</b>
<b>Usable area</b>	<b>54,91sqm</b>
<b>Roof angle</b>	<b>18deg.</b>
<b>Roof area</b>	<b>37,5sqm</b>
<b>Height on the ground floor</b>	<b>2,50m</b>
<b>Height at the ridge</b>	<b>5,50m</b>
<b>Weight of the set</b>	<b>8500kg</b>

<b>Equipment</b>	<b>Qty.</b>	<b>Dimensions</b>
<b>Skylights</b>	<b>2</b>	<b>68x118</b>
<b>Balcony door</b>	<b>1</b>	<b>238x248</b>
<b>Bathroom window</b>	<b>1</b>	<b>117x60</b>
<b>Gable window</b>	<b>2</b>	<b>206x119x169</b>
<b>Living room window</b>	<b>1</b>	<b>117x118</b>
<b>Patio door</b>	<b>1</b>	<b>213x103</b>



## HETKI FOUR

<b>Mounting elements</b>	<b>Qty.</b>
<b>Polystyrene grater</b>	<b>1</b>
<b>Membrane</b>	<b>2rolls</b>
<b>Stapler and staples</b>	<b>1 set</b>
<b>Mounting foam</b>	<b>12</b>
<b>Gun to foam</b>	<b>1</b>
<b>Roofing silicone</b>	<b>2</b>
<b>Expansion tape</b>	<b>3</b>
<b>Roof membrane</b>	<b>1set</b>
<b>Dysperbit</b>	<b>1</b>

### **Building kit HETKI FOUR**

**Panels SIP (12mm OSB3x150mm styrofoam12mmOSB3)**

**Construction timber**

**Set of screws**

**Set of flashings**

**Set of facade sheets**

**Set of façade boards**

**Set of boards for elevation**

